

# Cornish cream

A sympathetic design and fresh pastel palette have breathed new life into the Wasons' once dilapidated cottage.



Left Brushed steel knobs complement the flecked granite and appliances, while wainscoting offers a simple yet highly effective alternative to tiles.

With a shortage of work space but an excess of damp, not to mention small windows and walls over a foot thick, the tiny kitchen was not the most compelling of reasons to inspire buyers for this Cornish 19th Century cottage. Originally built as two farm hands' dwellings, the buildings were knocked together in 1962 before being extended.

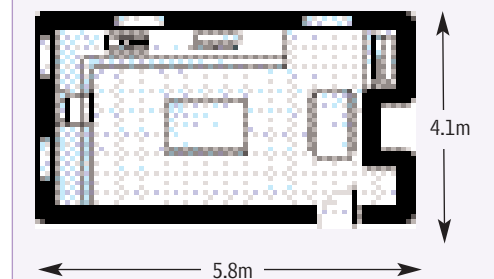
"It was awful, so run-down and depressing!" recalls Jennie Wason, an Environmental Consultant. "When my husband, Neil, and I moved in during 2001, we were met by plants growing out of the walls, but it was the cold, dank kitchen which shocked us the most." Although they had initially decided to broach this room first, a virtual rebuild of the entire house ensued, putting any ideas of a new cook zone firmly on the back burner. But then, as Jennie admits, it was a delay which actually turned out for the best, as it gave the couple plenty of time to decide what they really wanted from the hub of their home.

Jennie and Neil were in agreement that gaining space was the top of their list, and therefore the kitchen and dining area would become one domain. Just as importantly, the old windows would be enlarged and lowered to work surface height, thus opening up the formerly obscured views of the stunning surroundings, as well as flooding the soon-to-be >>

## INSIDE INFO:

Bespoke Shaker-inspired furniture in tulipwood exudes a simplistic elegance, while a combination of Farrow & Ball colours in Powder Blue and Pale Powder highlights the design's deliberately understated contours. Hand painted cabinetry is topped with Azul Platino granite, tying together a traditional aesthetic with the latest appliances. Landmark Bespoke Kitchens, Unit 3, Travail Business Park, 15, Normandy Way, Bodmin, Cornwall PL31 1EU. Tel: 01208 73285. [www.landmarkkitchens.co.uk](http://www.landmarkkitchens.co.uk) Kitchens cost from around £15,000.

## KITCHEN FLOOR PLAN:



dual-aspect interior with light. And yet, despite the planned building work, the kitchen still wouldn't be that vast. It was obvious that, whatever form the eventual layout took, it would need to work incredibly hard to make use of the available inches.

Landmark Bespoke Kitchens put the Wasons on the right track, as their Shaker-inspired styles were exactly what the couple had first envisaged. "Our ethos is that high quality craftsmanship should always shine through," explains Landmark's owner, Mat Davies. "As such, my approach follows the traditional values of form following function, teamed with the Shaker ideal of excluding all unnecessary embellishment and elaboration."

It was a philosophy that fitted perfectly with the Wasons, who were keen on a classic look that harmonised with the age and style of the cottage. "Jennie and Neil both had strong



**Left** The eco-conscious Dishdrawer allows for either one or both drawers to be used at any time, depending on the dishwasher space required. There is also an integrated combination microwave, which is positioned symmetrically to the adjacent oven, with a steel-fronted, sturdy warming drawer.

**Right** The table and bench were handcrafted by Neil, who also fitted the discreet hinged door, allowing the alcove to be used as extra storage.

**Below right** The supporting joist was buried into the high ceiling, allowing ample room for a period-style dresser complete with plate rack.



opinions on their requirements and, after spending seven years searching for their perfect scheme, had been overloaded with information," continues Mat.

"Another big complication was that the new area was to incorporate two existing rooms, which made it impossible, at the design stage, to fully appreciate the working footprint." The end result, without the hefty, rather clumsy, dividing line, was something which the pair found very difficult to visualise. "We simply couldn't imagine what the space would be like once the wall was removed. So, although I knew exactly what I wanted from the layout, it was difficult to anticipate how it would all work out," admits Jennie. "I understood that getting the balance of aesthetics and ergonomics was essential, but Mat was brilliant in coming up with a plan that pulled the two zones together perfectly – as well as restraining my tendency for introducing far too much detail!"

The pair's initial concerns were misplaced, as the kitchen, filled with pale blue and subtle off-white tones, maximises the feel of openness – accentuated by the deliberate avoidance of tiles. Instead, painted wainscoting extends around the boundary, merging the practical cooking elements with the softer dining area, while the dresser-style cabinet seamlessly bridges the individual spaces. "The whole room now works perfectly," enthuses Jennie. "All those years of planning and waiting have definitely paid off!" [PH](#)

